



PG SERIES AUTOMATED
PARKING BARRIER



Distributed in Australia and New Zealand
PARKING GUARD AUTO BOLLARDS
A division of Phase Changer Pty Ltd

10-12 Mackey Street, Longwarry, Victoria 3816
(Directly Opposite the Post Office)
Phone (03) 5629 9799
Fax (03) 9445 9274
Email: info@parkingguard.com.au

INSTALLATION & OPERATION GUIDE

Locating the Parking Guard:

The Parking Guard unit must be centrally located within the designated car park site to ensure that it will not be struck by adjacent vehicles when they enter or leave their own parking space. Check the level of the parking place to ensure that the unit will not be submerged in the event of heavy rain

The Parking Guard unit must be fitted to a secure foundation material of bitumen or concrete. The solar version of the unit must have direct line-of-sight access to sunlight for at least some part of the day.



Installation Preparation

Carefully mark and drill three 10mm holes in the car park surface using an appropriate masonry drill bit and hammer drill. The holes should line up with the three corresponding mounting holes in the base of the Parking Guard unit.

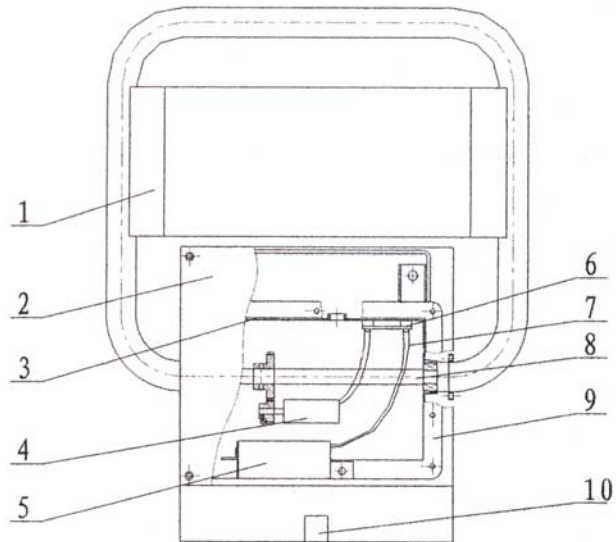
Insert the concrete bolts provided into the holes. Using the flat washers first, place the mounting nuts over the bolt studs and secure the unit firmly to the ground.

Where the 240V AC version is being installed, ensure that a good quality mains earth is applied to the case of the Parking Guard unit.

MODEL AND TECHNICAL SPECIFICATIONS

Model	PG-B	PG-YB1	PG-YB3
Description	Solar Powered Parking Guard With battery	Rechargeable Battery only Parking Guard	240VAC Powered Parking Guard with battery backup
Supply Voltage	Solar / 6V Internal battery	6V internal battery	240VAC
Maximum Power	36W	36W	36W
Items included	Solar parking guard, mounting bolts, rechargeable battery, back-up battery charger, two remote controls	Parking guard, mounting bolts, two rechargeable batteries, two remote controls, battery charger	Parking guard with internal backup battery, mounting bolts, two remote controls
Rise / Fall delay time	3-4 seconds	3-4 seconds	3-4 seconds
Radio transmit range	0-20 Metres	0-20 Metres	0-20 Metres
Working Temperature	-30° to +60° C.	-30° to +60° C.	-30° to +60° C.
Dimensions	460x500x70 mm	460x500x70 mm	460x500x70 mm
Weight	16 kg.	17 kg.	17 kg.
Price	\$420 +GST	\$395 +GST	\$410 +GST

MECHANICAL LAYOUT



- Barrier sign
- Upper cover board
- Sealing pad
- Motor
- Storage battery
- Control circuit
- Driving mechanism
- Drive shaft
- Machine enclosure
- Access lock

GENERAL OPERATION

Manual Activation Alarm

The Parking Guard unit has an anti-tamper feature to deter unauthorised persons from manually forcing the barrier flat to the ground. If the barrier is pressed downwards it will activate an internal siren alarm until the barrier is released back to the vertical position.

Manual Override of the Parking Guard Barrier.

In the event that the battery has become too flat to activate the drive motor, there remains a Manual Override method to access the car park position.

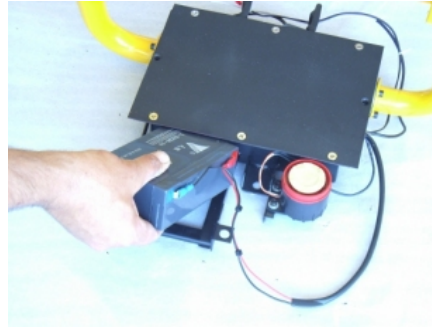
Use the access key that is provided with each unit to unlock the mechanical latch that holds the enclosure cover in place. Remove the cover and locate the chrome access ring on the end of a control cable. Briefly pull this access ring to disengage the barrier from the drive motor and press the barrier flat to the ground. This should now be possible to do without activating the anti-tamper alarm.



OPERATION GUIDE

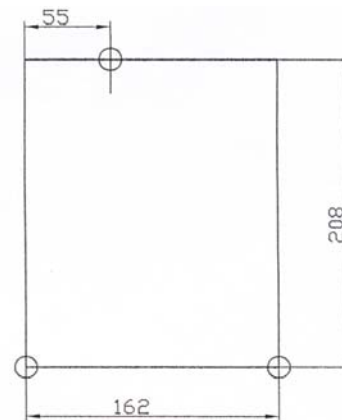
Low Battery Alarm

On the front edge of the Parking Guard unit there is an LED indicator that will glow when the internal motor-drive battery on battery operated units begins to go flat. If this happens, the battery should be removed and placed on a mains powered battery charger for approximately 12 hours. Depending upon usage level, a charged battery should operate the unit for several months without further intervention.



Hole Drilling Guide

This diagram shows the relative position of the mounting holes for a Power Guard unit. All dimensions are shown in millimetres.



Using the Remote Control Device

The remote control sender has two buttons on the front that correspond with UP and DOWN commands for the Parking Guard unit. Each sender has been pre-set in the factory to a unique digital access code that matches only one parking guard unit. There are several thousand possible combinations of these access codes. Pressing the A button should lift the barrier to a vertical position and pressing the B button should restore the barrier to horizontal.



MAINTENANCE OF YOUR PARKING GUARD

Maintenance

Before carrying out any cleaning or maintenance on 240V AC powered units, ensure that the mains supply is disconnected.

The Parking Guard unit should be cleaned regularly to ensure that the warning sign is not obscured. Any build up of dirt or mud should be removed.

At approximately 18 month intervals, the drive mechanism should be lubricated with a light grease. This maintenance may also be carried out by arrangement with the distributor of the Parking Guard product range.

Troubleshooting

Most problems that arise are usually linked to the battery connections or the condition of the battery. Depending upon the usage of the unit and the frequency of charging of the battery, a parking guard battery should last for 3-4 years. If the battery is left flat for an extended period, the life of the battery will be greatly reduced. If doubt exists about the integrity of the battery, take it to an automotive battery supplier/retailer for testing, or contact the Parking Guard distributor for advice.

If the battery within the Parking Guard unit is charged, but the remote will not trigger a raise or lower activation cycle, it is then best to check the integrity of the small battery within the key ring sender unit and replace it if necessary.

